

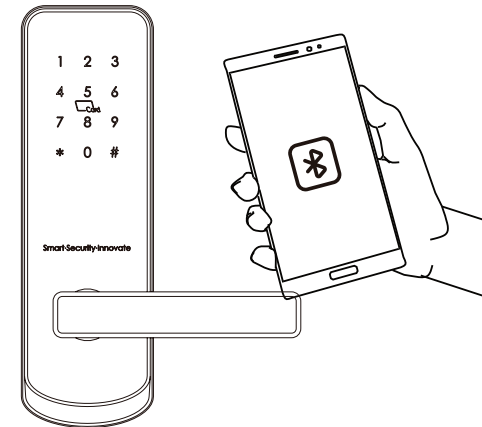
Limited Warranty

1. Warranty of goods supplied will be one year from date of release of goods to Client. Warranty is limited to manufacturer's defects.
2. The Product shall not be used in conjunction with any spare parts or software not provided by Porta. Warranty shall not be covered with any damage caused by using accessories or software not provided by Porta.

Disclaimer

We continuously optimize products as new technologies and features are developed. For this reason, we reserve the right to make alterations to the products without prior notice.

User Manual



IC Card



Passcode



Mechanical key



APP

User Manual of Linko One Touch Apartment Lock



Dear Users,

Thank you very much for choosing **Linko Group Bluetooth Digital Lock**. Please read our User Manual carefully before using.

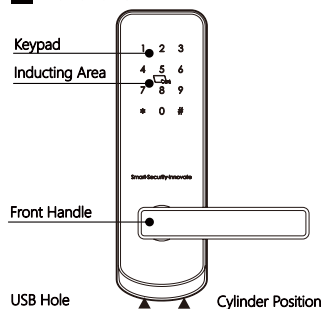
Should you require any further information, please feel free to contact us at any time, we shall be delighted to assist you.

1 SYSTEM INTRODUCTION

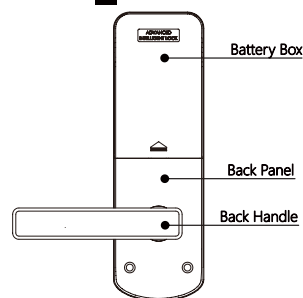
| | |
|---------------------|---|
| Material | 5# Zinc alloy,304#stainless steel, ABS |
| Available Color | Satin Nickle and Black Nickle |
| Door Thickness | 38-55(mm) |
| Communication | Bluetooth 4.0 BLE |
| Support OS | iOS 7.0 or above, Android 4.4 or above |
| Battery Life | 10000 times normal open(12months) |
| Power Supply | DC6v:4pcs AA alkaline batteries |
| Static Current | 45uA |
| Dynamic Current | <200mA |
| Unlock Way | IC card,Passcode,APP, Wristband,MechanicalKey |
| Unlock Time | 1-1.5seconds |
| Working Temperature | -20~45 degree |
| Working Humidity | 10%~95% |
| IP Class | IP62(Not standard) |
| Available Mortise | 50/60 single latch,5050/6050 mortise |
| WiFi Gateway | Available |
| Packing | Carton box with EPE inside |

2 PRODUCT SPECIFICATION

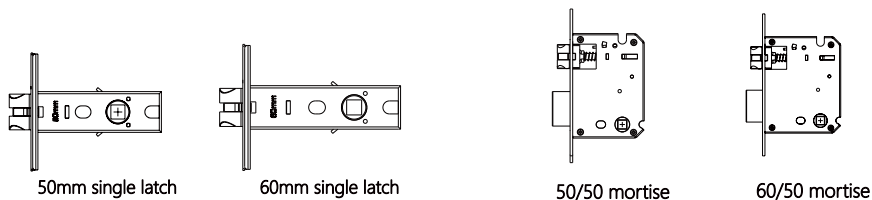
Front Panel



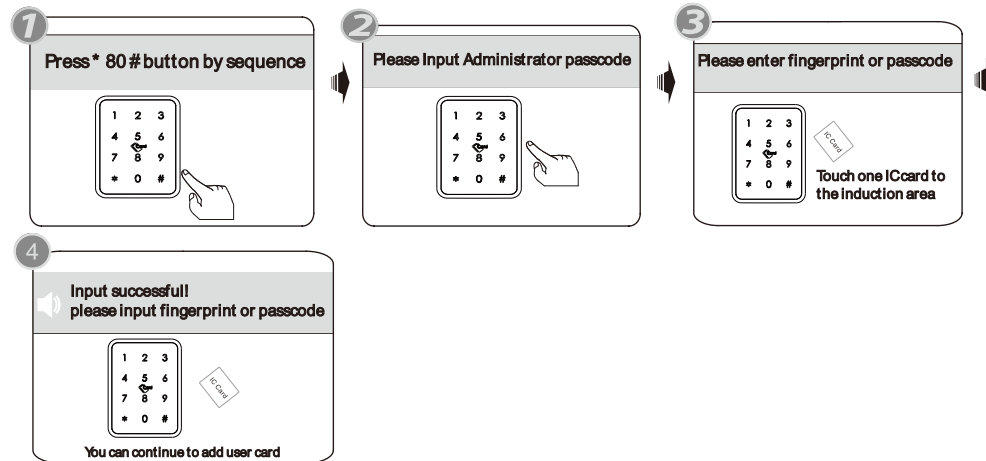
Back Panel



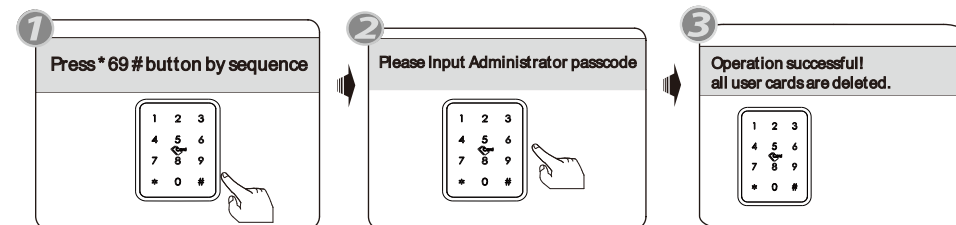
Available Mortises:



8.Enroll User Card

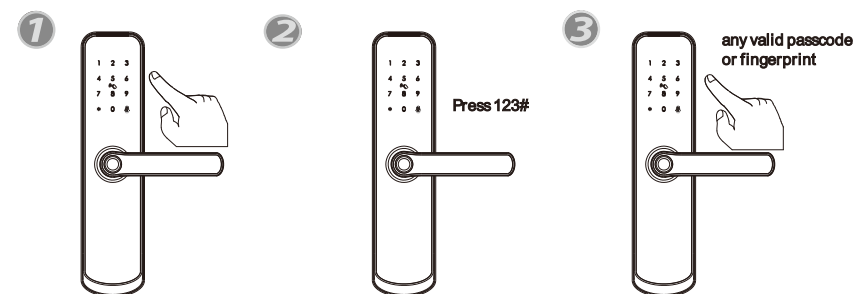


9.Delete User Card

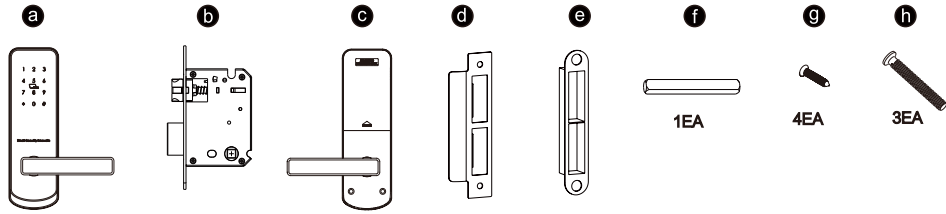


10.Passage M ode

Unlock the door with any valid passcode or fingerprint.
 Press 123# button during the time of unlocking.
 Sound tip: the lock set to passage mode
 Then the lock is under always open state, you can enter any valid passcode or fingerprint to cancel this function.



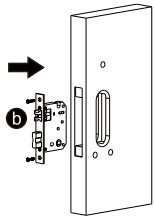
3 ACCESSORIES



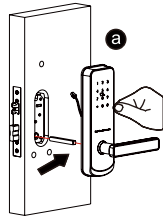
4 INSTALLATION STEPS:

1. ASSEMBLE MORTISE AND PANEL

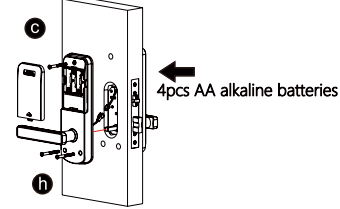
1.1 Assemble mortise



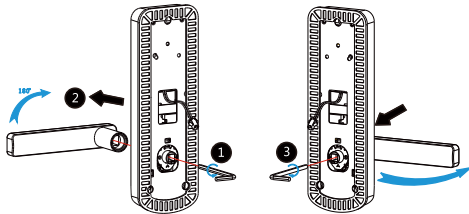
1.2 Cross the small latch and fix front panel



1.3 Connect the cable
Fix the back panel with front panel

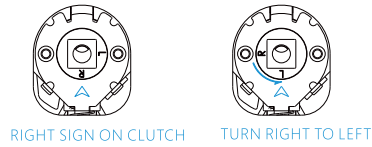


2. CHANGE HANDLE (RIGHT TO LEFT WITH 50/50 MORTISE)

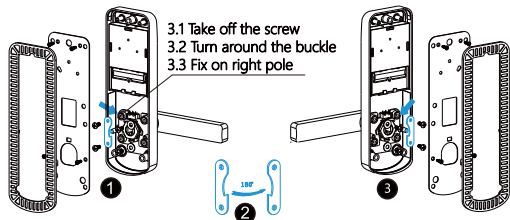


2.1 Take off the screw from the handle head
2.2 Rotate the handle 180 degree from right to left position

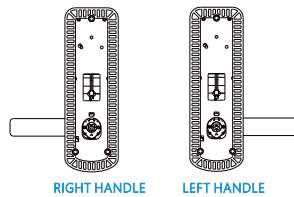
2.3 Tighten the screw 2.4 Turn the clutch sign from R to L



3. CHANGE HANDLE (LEFT TO RIGHT WITH SINGLE LATCH) 4. HANDLE DIFFERENCE (RIGHT & LEFT)

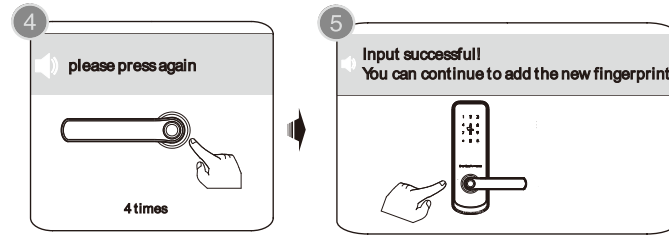


3.1 Take off the screw
3.2 Turn around the buckle
3.3 Fix on right pole

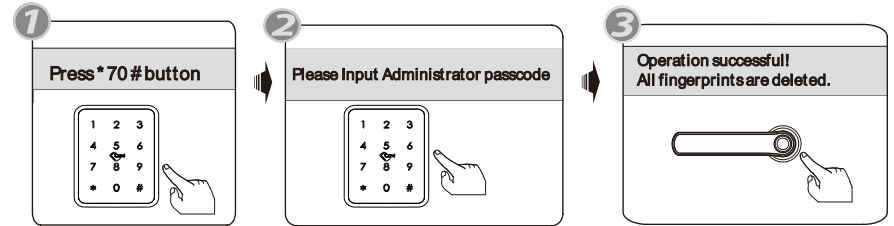


RIGHT HANDLE LEFT HANDLE

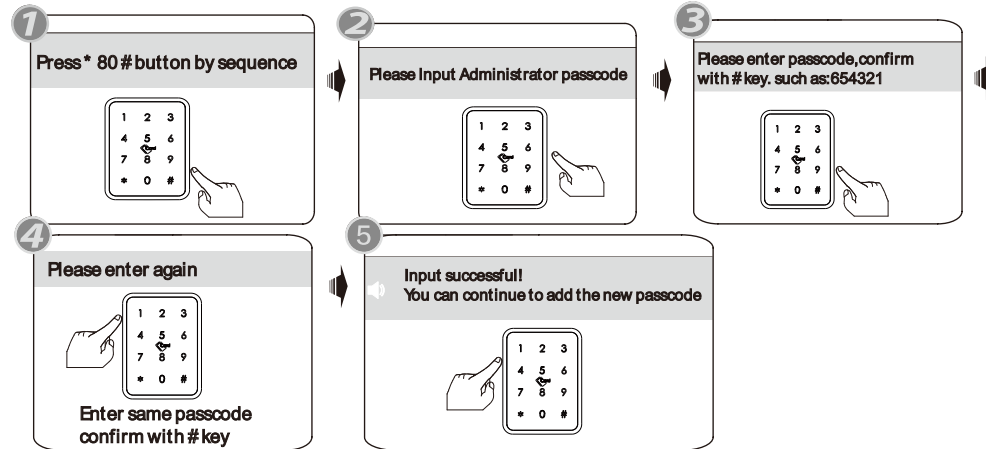
RIGHT SIGN LEFT SIGN



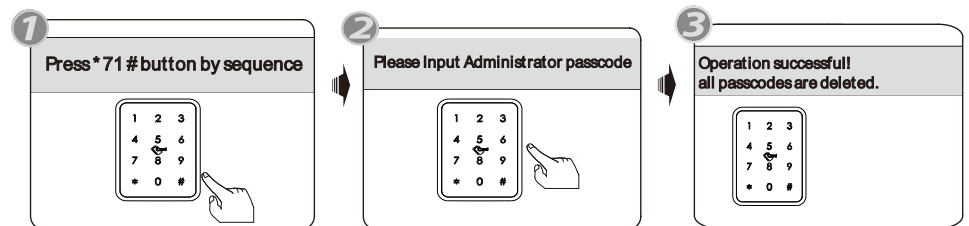
5. Delete User Fingerprint



6. Enroll User Password



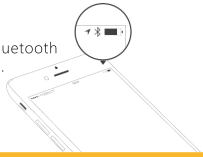
7. Delete User Passcode



Operations for Bluetooth Digital Lock

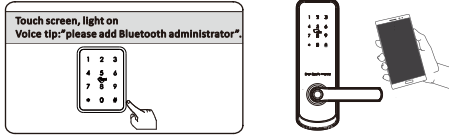
Attention

- Please turn on your phone's bluetooth function before any operation.



1. Enroll Mobile Administrator

- Factory state: press *12#123456#new passcode#new passcode#.
- You can use the mobile APP to add the Bluetooth administrator. When adding the door locks, operations must be completed near the lock.



2. Change Master Passcode

you can find the new master passcode in the mobile APP under 'Settings'. also you can edit the master passcode on App directly and upload Admin passcode to the lock like the below photo.

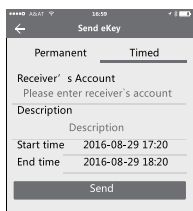


3. Send one permanent eKey



Step 1: Click device name Step 2: Click the eKey Step 3: Enter the receiver info

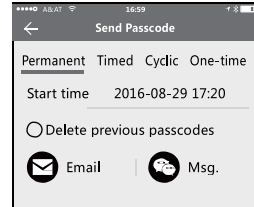
4. Send one timed eKey



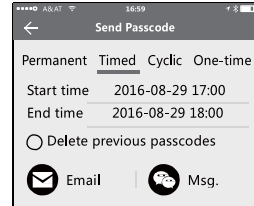
- During the authorized period of time, the receiver can unlock the lock without times limit, after the limitation of time, it will be invalidated automatically.

5. Send a timed passcode

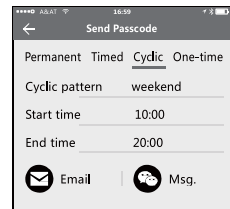
- Passcode is with four types: Permanent, timed, cyclic and one-time. you can set the passcode accordingly.



- Permanent passcode will not expire, but the administrator can delete them in the user list at any time.



- Notice: if you tick the [Delete previous passcode], all the passcode that have been used on the lock will be deleted while the new generated passcode is used on the first time.
- The passcode shall be used once within 24 hours after the start time, otherwise it will be invalid.



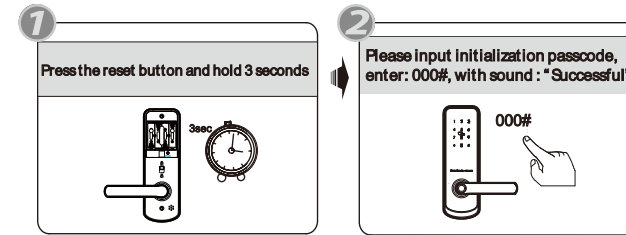
The cyclic passcode's cycle is one week and can be used cyclically for one defined period of time. For example, if the time is valid when setting to 10:00~20:00 every weekend, the user can only open the door at the setting time every weekend and can not open the door at any other time.

The passcode shall be used once within 24 hours after the start time, otherwise it will be invalid.

OPERATION STEPS

Please enroll the administrator before you start to use this lock. you can follow the operation steps as below:

1. Initialization



2. Factory State

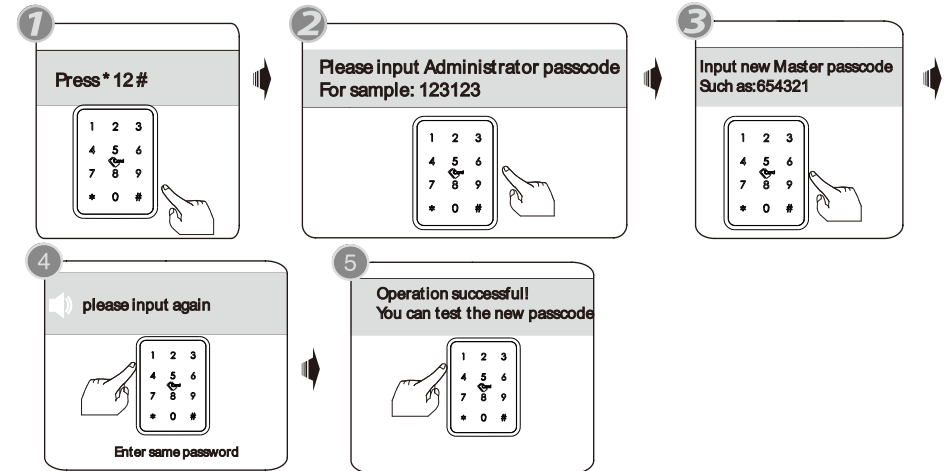
Factory state: Default master passcode is: 123456.

2. Enroll Administrator

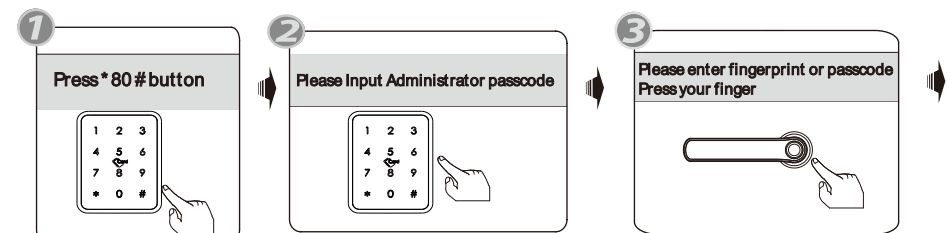
2.1 Factory state: press *12#123456# new passcode# new passcode#.

3. Change Master Passcode

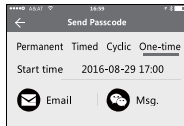
Please find the operation steps below:



4. Enroll User Fingerprint



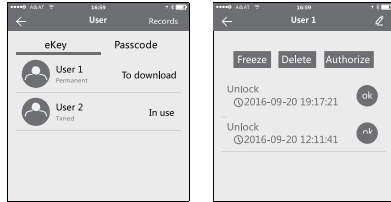
6. Send one-time eKey



- The one-time passcode is valid for 6 hours after the start time, otherwise it will be invalid.

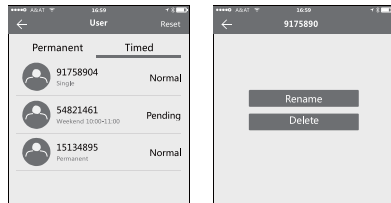
7. User management

- Passcode is with four types: Permanent, timed, cyclic and one-time. you can set the passcode accordingly.



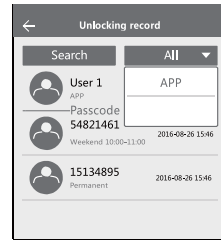
- In the list of eKey user management, click the user perform the according operation:

[Modify Validity]: click the \emptyset to modify the validity period of user's previous eKey
 [Freeze]: The user key can be temporarily frozen so that it is disabled the unlock function.
 The function can be recovered after freezing is removed.
 [Authorize]: Authorize the receiver to send an eKey or passcode to other users. In all of the above operations, the phones of two parties need to connect to the internet, if the users can not connect the network correctly, the administrator's command will be responded after the internet is connected.



- In the list of passcode user management, you can label the user. Click the user to perform the according operation:
 [Rename]: This function can label the user and facilitate the management of passcodes.
 [Delete]: This function can delete the user directly.

8. Unlocking Records Query



- Each time the ordinary user unlocks the lock with the eKey sent by the administrator, one record will be generated automatically and sent to the administrator's phone APP.

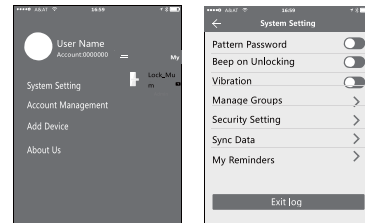
Attention

- If one lock has been added by one phone, it can not be added by other new phone unless:
 - The previous administrator delete it from his APP next to the lock.
 - The reset button on the lock is long pressed for initialization.
- Deleting the passcode must be operated next to the lock.
- Enter the software interface and click the \equiv button to add locks as the pop-up list suggest.

9. Key Setting

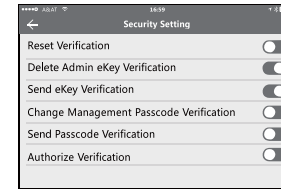


- Enter the device interface and click the ⚙ button to name the device and view the current administrator's passcode.



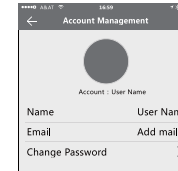
- Enter the software interface and click the \equiv button, the options can be selected in the pop-up users.

10. Security Setting



- The verification function in the security setting is to prevent the illegal operation on a stolen or lost mobile phone. This function is only activated when the administrator operates the device and manages the users.

11. Account Management



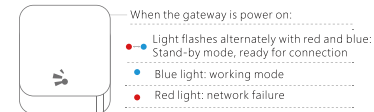
- Click the option to pop up the picture the uploading feature and set the image, display your account, mailbox and other information. To modify the password, verification of original password which is needed.

12. WiFi Gateway (G2 version)

- The new version WiFi gateway is with improved performance and long communication distance. Please refer to the parameters and operations.

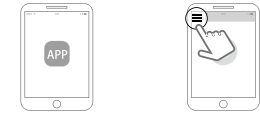
| | |
|------------------|-------------|
| Model: | G2 |
| Dimension: | 70x70x26mm |
| Network: | WiFi 2.4G |
| IEEE Standard: | 802.11b/g/n |
| Power Interface: | Type-C USB |
| Power Input: | DC5v/500mA |

Light Status



Pair the Gateway with APP

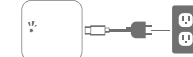
- Activate the APP on mobile
- Press the button \equiv



- Select the [Gateway]
- Select the [G2]



- Plug the gateway and power on it, while the light flashes alternately with red and blue



- Press the \oplus sign



- Add Gateway
- Select the WiFi and enter the password



- Finish pairing Gateway

- Notice: if times out, please power on the gateway and try it again.

13. Reset the lock

